



let your light shine!



Maths

First we will complete our work solving problems about **time**. Then we will explore **geometry** exploring the properties of 2d and 3D shapes. Finally we will look at **statistics** and interpret and draw tally charts, pictograms and bar charts. We will then collect and represent our own



Art and Design Sculpture and 3D:

We will explore abstract shape and space and we will manipulate a range of materials. We will learn ways to join and create free-standing



Geography

Are all settlements the same? We will explore different types of settlements, land use, and the differences between urban and rural. We will describe the different human and physical features in our local area and make comparisons with New Delhi.

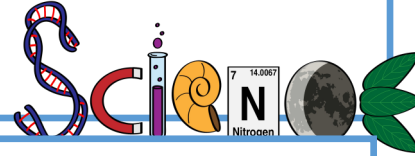
Music We will listen to a range of traditional instruments and create our own improvisations around the theme 'India'.



Year 3 Summer Term 2 on a page

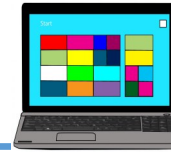
Science

Light: We will learn how we need light in order to see and how light is reflected from surfaces. We will learn how light from the sun can be dangerous and ways to protect ourselves. We will explore how shadows are formed and look for patterns in the way that the size of shadows change.



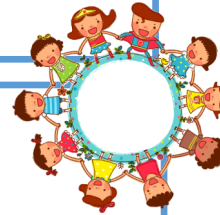
Computing

Touch Typing: We will develop touch typing skills. We will learn to recognise keyboard locations, understanding correct finger positioning, improving accuracy and speed.



PE

We will be playing cricket and exploring outdoor adventurous activities.



PSHE Changing Me: We look at how babies grow and develop and how our bodies change on the outside and the inside as we growing up.

Spanish

Our topic for this term is '@at the farm'.



English We will read persuasive adverts and write our own to advert to 'Save our beautiful bees'. Then we will explore the language of poetry and read and write a variety of poems including The Owl and the Pussy-cat, Jabberwocky as well as clerihevs and limericks.

RE

We continue our unit on Christianity exploring friendship and loyalty and self-discovery through C.S Lewis' novel The Lion, the witch and the Wardrobe.



Important Notes

PE Days — Tuesday and Thursday the first week then Wednesday and Thursday the following weeks
Termly Value— Wisdom Homework—daily reading, daily spelling practise, and weekly quiz, weekly maths, English or creative homework .

