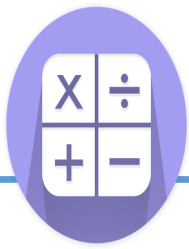




Let your light shine!



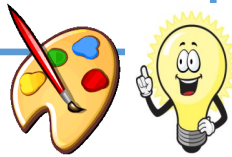
## Maths

In this term we will complete our work on multiplication and division, finishing off by focusing on the 5 and 10 times tables.

Following this we will move on to looking at measurement, starting with length and height before moving onto mass, capacity and temperature.

## Art

In Art this term we will be using clay to make clay house tiles. We will learn clay modelling techniques and how to design and then apply them to a project.



## Geography

In Geography this term we will explore our wonderful world. We begin by exploring key features of the UK before moving on to broadening our learning by looking at the oceans and then returning to focus on what makes our local area special.



## Music—On this Island

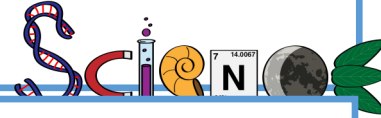
In music we will be singing traditional British Folk songs and creating structured soundscapes.



# Year 2 Term 4 on a page

## Science

In Science we will learn about seasonal changes that we see and experience in our country before developing our investigating skills by undertaking a range of Science experiments.



## Computing

In I.T. we will be learning what an algorithm is and how to create and de-bug computer programmes.



## PE

Yoga - Our indoor sessions will focus on building strength in our bodies and mindfulness.

Invasion Games - Outdoor PE will involve developing teamwork and agility.



## PSHE— Healthy me

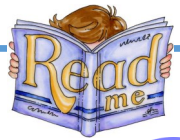
Our focus in PSHE this term will be on how we keep ourselves healthy. This will range from eating healthy food, to exercising, brushing our teeth and learning medicine safety.

## English

In English this term we will link our writing to our Science topic by writing a non-chronological report about the seasons.

We will then be writing a postcard, learning how to use apostrophes for omission and write in the first person. We will continue to practice using conjunctions and different punctuation marks in our writing.

We will continue to use Phonics to support our reading and spelling throughout the year.



## RE

In our religious studies we will be looking deeply into the connection between the 3 Abrahamic religions. What similarities and differences can we see between them?



## Important Notes

PE Day : Monday and Wednesday

Termly Value: Hope

Homework: Set on a Friday. Maths times tables and Spellings. We will perform a low stakes quiz in school.

